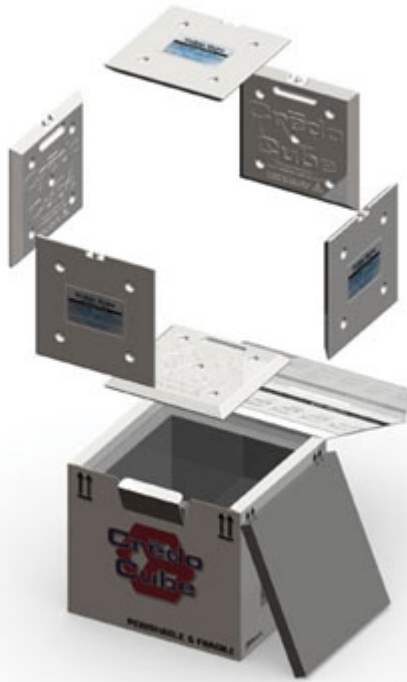


Packaging/Drug Delivery

Refinements in Cold Chain Secondary Packaging

Date: 2009-03-29

Optimized dimensionality is the goal of new products from MTS and Cold Chain Technologies



With the rising volume—and value—of temperature-controlled specialty pharmaceuticals, it makes sense for suppliers of secondary packaging to upgrade their product offerings. One new entry is for individual cases; the other is to accommodate recent changes in the Envirotainer RKN t2, a pallet-sized container for air freight.

CREDIT: MTS
Minnesota Thermal Science (Plymouth, MN) has unveiled the Credo Cube, a patented technology that features customizable wall dimensions. The modular design of the Cube, combined with its range of phase-change materials to preserve a temperature setting for several days, allows for payload sizes of 127 to 5800 cu. in. (2-95 liter), and temperature ranges of room temp to

-50°C. The Cube has six interchangeable walls, which can be stacked into standard freezers for pre-conditioning, and allow for ease of transport or return.